

# Accessibilities Committee

## Deaf Access Work Group

- **Increasing accessibility to AA meetings for Deaf and Hard of Hearing people.**
- **Assist Area 11 AA in carrying the AA message to the alcoholic who still suffers.**

# Why we exist...

- **To provide certified American Sign Language (ASL) interpreters, as requested, at meetings and Area 11 events.**
- **To coordinate with Groups/General Service Representatives (GSRs) and Districts to help make Area 11 AA more Accessible.**



---

Request for Accessibilities Services

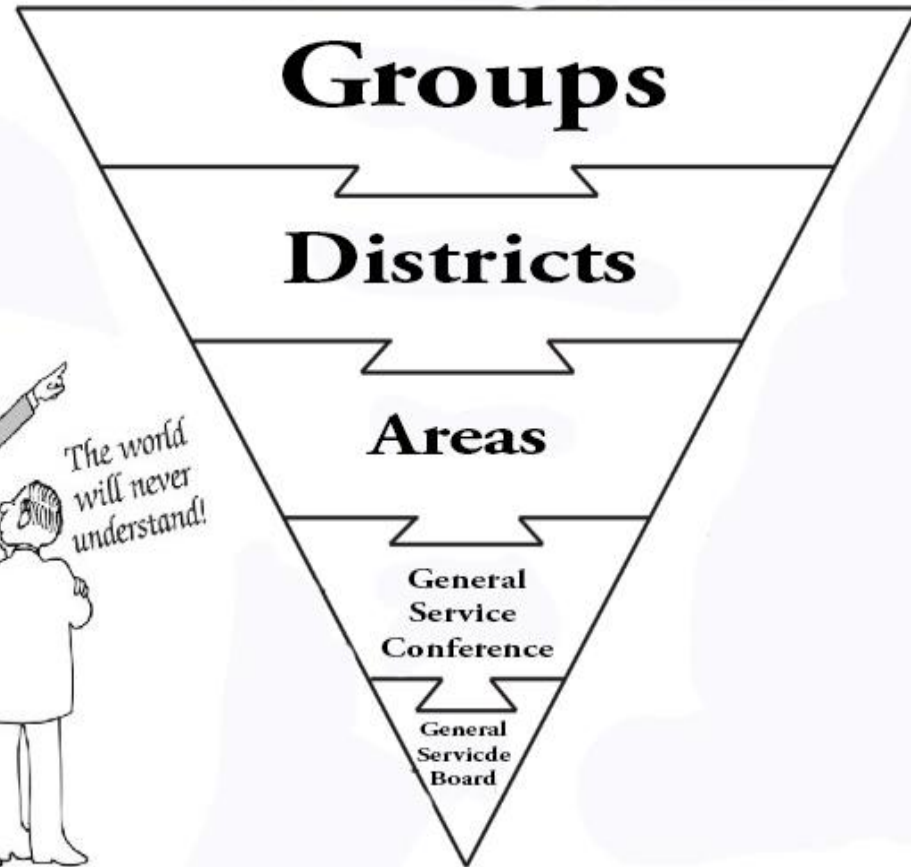
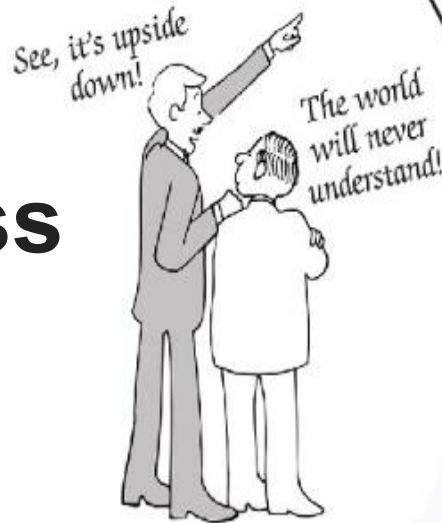
**Online Form: [ct-aa.org/accessibilities](https://ct-aa.org/accessibilities)**

*The CT Deaf Access Committee is affiliated with the Area 11 Accessibilities Service Committee structure to ensure our events and groups are as accessible as possible for our members.*

**[accessibilities@ct-aa.org](mailto:accessibilities@ct-aa.org)**

# Where Does Deaf Access Begin?

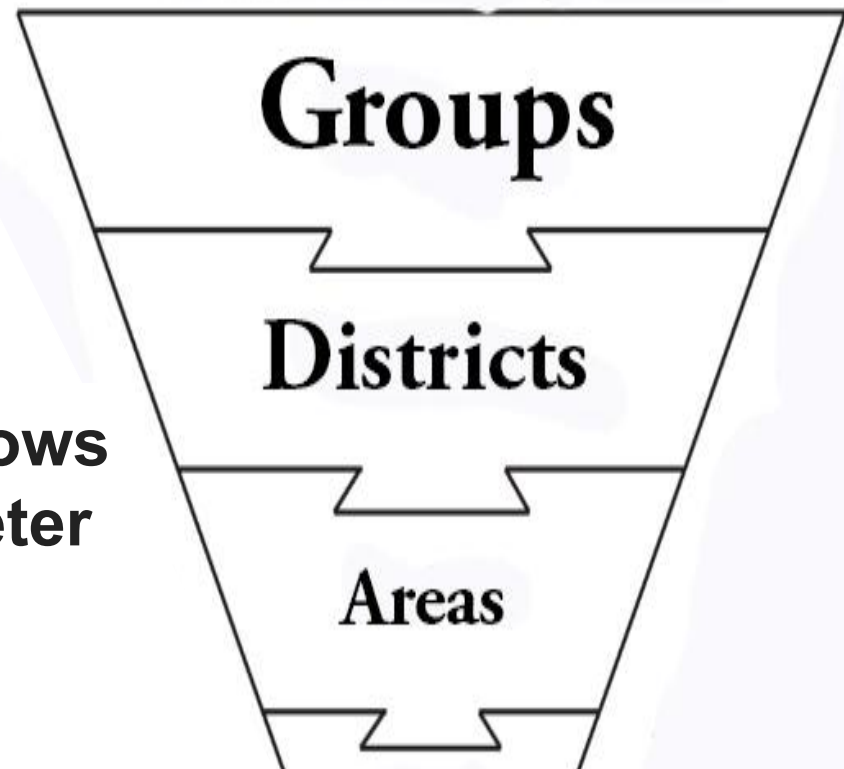
How we work  
together to  
help the Deaf  
alcoholic access  
AA?



~ Our Spiritual Pillars ~  
*Recovery, Service & Unity*

**Unity at all levels!**

- Deaf and hard-of-hearing fellows often request an ASL interpreter prior to coming to their first meeting.



- The GSR works together with the CT Deaf Access Committee (Area 11 Accessibilities) to make the meeting Accessible and coordinate ASL services.



# The ABCs of ASL

## ASL AA Meetings

Meetings in ASL, so people can experience recovery in their own language.

## ASL Interpreted Meetings

Coordinating ASL Interpreters so that Deaf individuals may attend any AA meeting of their choosing.

## Resources

Share info at Districts, Group Consciences, and AA meetings on making the AA message accessible to all.

# Budget Considerations

## *Reminders:*

- Area 11 does not contribute financially to Groups and Districts as they are self supporting.
- Interpretation and/or translation costs are assumed by the Group and/or District that hosts the AA meeting/event.
- Please contact the Area 11 Accessibilities Committee Chair and/or Treasurer for more information about this structure.

[accessibilities@ct-aa.org](mailto:accessibilities@ct-aa.org)

[treasurer@ct-aa.org](mailto:treasurer@ct-aa.org)



# Deaf Members

- **Speak directly to the member.** *If online, spotlight the member when they are sharing (not their interpreter).*
- **ASL is a separate language.** *Don't assume that a Deaf member can read English*
- **ASL is a visual language.** *Sight lines are extremely important. The Deaf member and interpreter need to be able to see each other clearly in order to communicate.*





# Room Set Up Tips

- **Save a seat for the Deaf member...** *in the front row of the meeting so they can see the interpreter, unobstructed.*
- **Set a chair for the interpreter...** *next to the main speaker, or chair, on whichever side the Deaf member is seated.*
- **Consider arranging chairs in a circle,** *if possible, rather than in rows. Sight lines!*



# More tips

- **Microphones...** *Speak clearly. Stand “probably a little closer than you think you need to be.” You really need to have it right up to your mouth.*
- **Readings...** *slow down a little! Send preparatory materials in advance (eg., send link for Doctor’s Opinion)*
- **Exchange cell phone numbers...** *between the group GSR and the interpreter, so you can reach other directly.*



## Basic Guidelines for Group/GSR and Deaf Members

- **Cancellation Policy...** 24 hour notice for Deaf members and Interpreter cancellation.
- **Finances...** Certified ASL Interpreter fees are \$75/hour. Discussions about finances with a GSR/Group must occur as soon as the need for an interpreter arises.
- **Communication...** Texting confirmations of attendance 24 hours before a meeting/event with any new details is key.

# **A.A.® Guidelines**

**Sharing the A.A. Message with  
the Alcoholic Who Is Deaf  
or Hard-of Hearing**

from G.S.O., Box 459, Grand Central Station, New York, NY 10163

***"Knowing ASL is not the same as being an interpreter who is trained and qualified [and certified] to effectively translate between languages and cultures."***

**[\(Pamphlet MG-13\)](#)**

# Prominent Deaf Access Committees in AA

*Service fellows sharing resources to increase accessibility*

- **Portland Deaf Access Committee (PDCA)** ~ Initiated 2001  
[pdacaa.org](http://pdacaa.org)
- **Central Texas Deaf Intergroup** ~ Initiated 2010  
[centexdeafintergroup.org](http://centexdeafintergroup.org)
- **New York City Deaf Access Committee** ~ Initiated 2022  
[nycdacaa.org](http://nycdacaa.org)

**Making Great Progress!!!**

**WE are Responsible.**

**When anyone, anywhere,  
reaches out for help,**

**WE want the hand of A.A. always  
to be there.**

**And for that:**

**WE are Responsible**

